



Installation of the PocketGPSWorld.com Safety Camera Database: Garmin i3

Document Synopsis

This document describes the initial installation and subsequent updating of the PocketGPSWorld.com Safety Camera Database on the Garmin i3 Personal Navigation Device

Author: Mike Barrett
Date: 5th Oct 2005
Revision No: 1.0
Status: First Draft
File: Garmin i3 POI install.doc

This document contains information proprietary to PocketGPSWorld.com and may not be reproduced, disclosed, or used in whole or in part without the express written permission of PocketGPSWorld.com.

Introduction

The PocketGPSWorld.com started their Safety Camera Database back in 2002 with only a few hundred cameras that the site owners collected. Three years on we have details of over 7000 cameras throughout the whole of the UK. These are divided in to groups by type and speed where appropriate.

The Safety Camera Database can be installed on a large number of navigation systems including the Garmin i3. Safety Cameras are installed and removed constantly so it is crucial that your system is kept up to date.

This document describes the process of installing the Safety Camera Database initially, and also describes how and where to obtain the updates from. This will ensure that your system is as current as possible and will alert you to accident blackspots and other danger areas on the roads as you are driving.

Getting Started

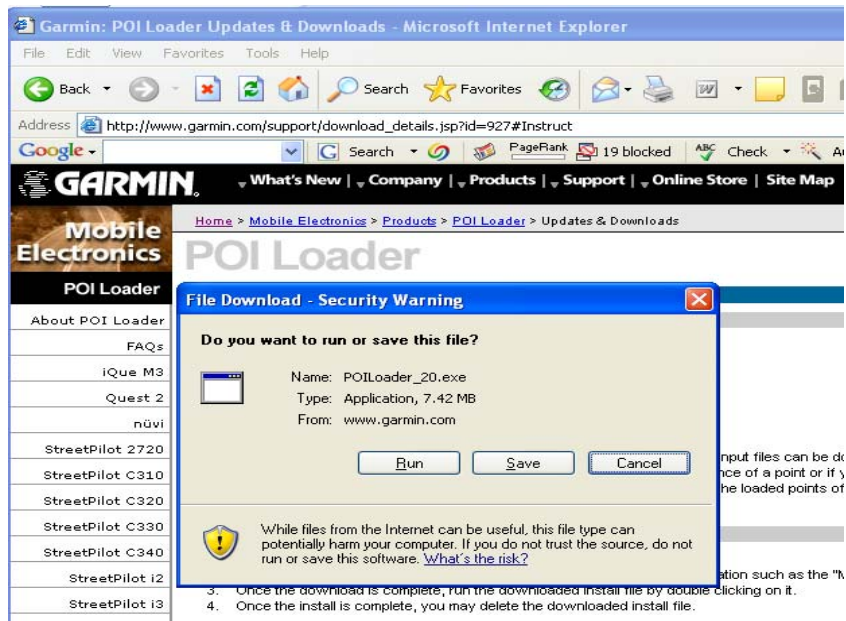
Prerequisites

Before you can load the Safety Camera Database onto the i3 you will need the following:

- A PC with a spare USB port
- The Garmin POI Loader installed
- The latest database from the PocketGPSWorld.com site.
- The Garmin i3 itself
- The supplied USB cable

Installing the Garmin POI Loader

The Garmin POI Loader application is available for free from the Garmin Website. To get the latest version of this software you will need to download it from the Garmin Website at <http://www.garmin.com/support/agree.jsp?id=927> . The download is about 8Mb in size and will take a while to download on a modem connect, or a few minutes on a broadband connection.



When requested you can either download the POI Loader and install it from where you saved it or you can download it to a temporary area and run it immediately.

Simply follow the onscreen instructions to install the application and in a few moments you will have the Garmin POI Loader installed and ready to use.

Installing the Safety Cameras

There are cameras being commissioned and de-commissioned constantly. This means that the Safety Camera Database would rapidly become outdated. Fortunately the team at PocketGPSWorld.com are continually updating the database and release updates once a month.

Installing the updates on the Garmin i3 or other POI Loader compatible system is very easy. First you will have to download the files from the PocketGPSWorld. The database is updated every month and is normally released in the last few days of the month.

The page <http://www.pocketgpsworld.com/garmin-poi-loader-speed-cameras.php> details the download procedure.

Look for the Version number and date to see if the database has been updated since your last download. If the database has been updated click on the “*Download the database*” link. This will prompt you to download the zip file to your PC.



Once the zip file is on the PC open it and examine the folder structure. There should be a folder called “Garmin” inside it. Just copy the Garmin folder to a location on your computer and use that to update your Garmin i3.

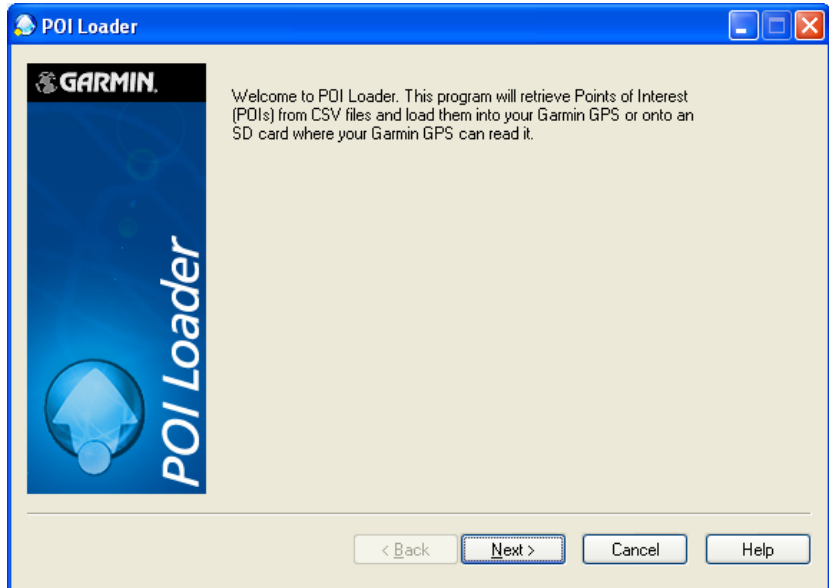
These csv files should all be copied to a location on your computer and used for the POI Loader.

Preparing for installation

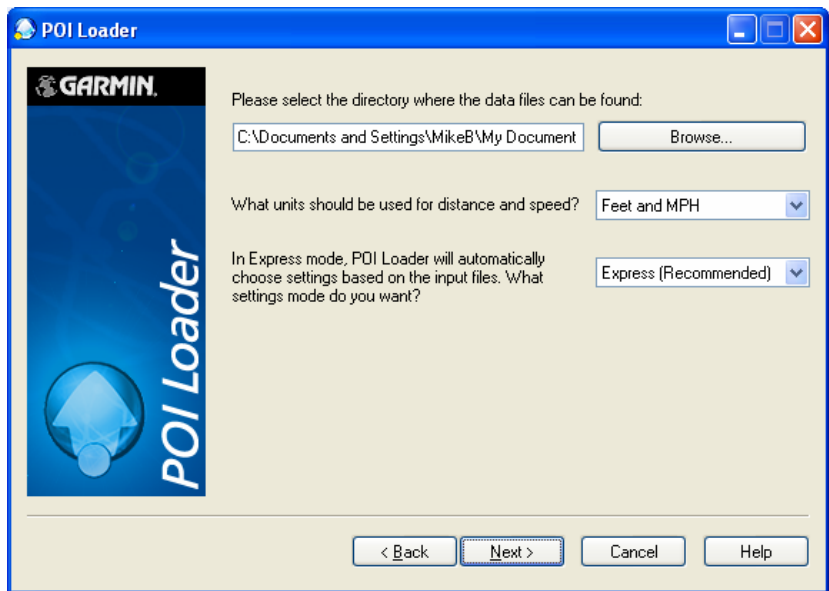
To get ready to install the PocketGPSWorld.com Safety Camera database all you need to do is: download the current database to your computer then Connect the Garmin i3 to the PC and off you go. The Garmin i3 will be powered by the USB cable.

Installing the Safety Camera Database

As soon as you plug the USB cable in the Garmin i3 the GPS will turn itself on and the PC will automatically launch the Garmin POI Loader application.



Click Next to move to the main application screen.



From the main application screen click on the browse button and navigate to the safety camera folder on your computer. Once you have found the correct folder press next.

This will start the download and conversion process. It will take about 20-30 seconds to download the Full set of Safety Camera database files. When that is complete the Garmin i3 will reboot. Your i3 is now ready to use with all the Safety Cameras loaded and default warnings configured.

If the default warnings are not what you want then you can select Manual instead of Express and configure each file in the folder individually. Consult the help file for more details.

Troubleshooting

If you have any problems loading or updating the PocketGPSWorld.com Safety Camera Database onto your Garmin i3 the forums at www.PocketGPSWorld.com are a valuable resource in particular this topic is dedicated to the Garmin POI Loader
<http://www.pocketgpsworld.com/modules.php?name=Forums&file=viewtopic&p=152750#152750>
